

# Summer Nature Camps 2013!

Steele Creek Park  
Nature Center

**Exploring Nature Through Journaling Camp** — Get ready for adventure with this brand new camp! We'll be going way off the beaten path and exploring some of the most remote areas of Steele Creek Park in this action-packed nature camp. We'll travel light and learn how to record our observations and make a lasting account of our travels through nature journaling. This one is a do-not-miss!



Ages 7-9                  June 3<sup>rd</sup> - 7<sup>th</sup>  
Ages 10-13                June 10<sup>th</sup> - 14<sup>th</sup>

**Young Scientists' Camp** — What is science? How is it done? These questions will be at the heart of this new camp. Kids will learn about all aspects of the scientific method while trying their hands at it in the field. Ecological studies, zoology, botany, and even physics and climatology will be explored during this week of camp. Perfect for that budding scientist at home!

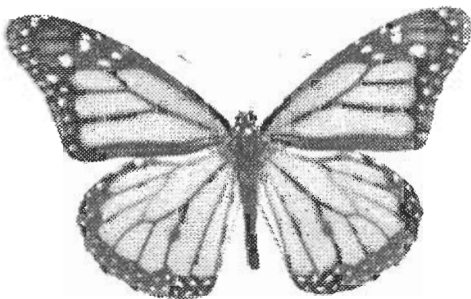
Ages 7-9                  June 17<sup>th</sup> - 21<sup>st</sup>

**Geology Rocks Camp** - Rocks, Minerals, Fossils, and the processes that form them will be the focus of this camp. Children will be introduced to their planet Earth through a variety of programs, hikes and field work. Participants will also get to take part in an actual fossil dig!

Ages 10-13                June 24<sup>th</sup> - 28<sup>th</sup>

**Nature Photography Camp** — This camp offers kids the skills and opportunities to capture astounding images from Steele Creek Park. Each day will be a new technique and new opportunities for great shots! No camera? No problem - we have cameras to loan to all participants during this camp!

Ages 7-9                  July 8<sup>th</sup> - 12<sup>th</sup>  
Ages 10 - 13                July 15<sup>th</sup> - 19<sup>th</sup>



All camps are limited to 15 participants. The registration fee is \$55.00 (\$50.00 if paid before May 15<sup>th</sup>), which includes a t-shirt and all materials for the camp. Camp scholarships are available for those in need of assistance. Camps begin at 8:30 am and last until 12:00 noon. For more information please contact the Nature Center at 423-989-5616 or the Department of Parks and Recreation at 423-764-4023, or you can email [jstout@bristoltn.org](mailto:jstout@bristoltn.org).