

Friends of Steele Creek Nature Center and Park

# Knobs and Knolls

---

*In This Issue*

---

**October 2018**

---

[\*\*"Give it to Beaver"\*\*](#)  
[\*\*Campaign\*\*](#)

---

[\*\*Wildlife Weekend 2018 in\*\*](#)  
[\*\*Words and Pictures\*\*](#)

---

[\*\*Wildlife Weekend Photo\*\*](#)  
[\*\*Contest Winners\*\*](#)

---

[\*\*Upcoming Nature Center\*\*](#)  
[\*\*Programs\*\*](#)

---

[\*\*Community Partnership\*\*](#)  
[\*\*Program\*\*](#)

---

## ***GIVE IT TO BEAVER!***

Did you know that, in the past few years, beavers have returned to Steele Creek Lake? And to celebrate, we're preparing to build our very own indoor Beaver Lodge Exhibit!



Thanks to the support of hundreds of our community "Friends", the expanded Nature Center opened last October with five entirely new displays and a 1,200 square foot multipurpose classroom. In addition, a new exhibit sponsored by the Blue Stocking Club and featuring the geology and the native aquatic species found in the Park has just been completed. If you haven't been to the Nature Center since we reopened, come take a look at what you've missed so far.

We have plans to build five additional major exhibits as well as two new flexible galleries. These will be added as funding becomes available for each. Our first priority is to install the Crawl-in Beaver Lodge, to be located in the alcove behind the large aquarium array in the main gallery upstairs. This exhibit will feature a realistic, life size beaver dwelling similar to those currently found in the Park. Our exhibit designer, Ed Hackley, is finalizing detailed plans for the display. Our awesome partners, *Ponds and Plants*, will be responsible for bringing Ed's designs to life, just as they have with our other major displays.



## GIVE IT TO BEAVER! (Continued)

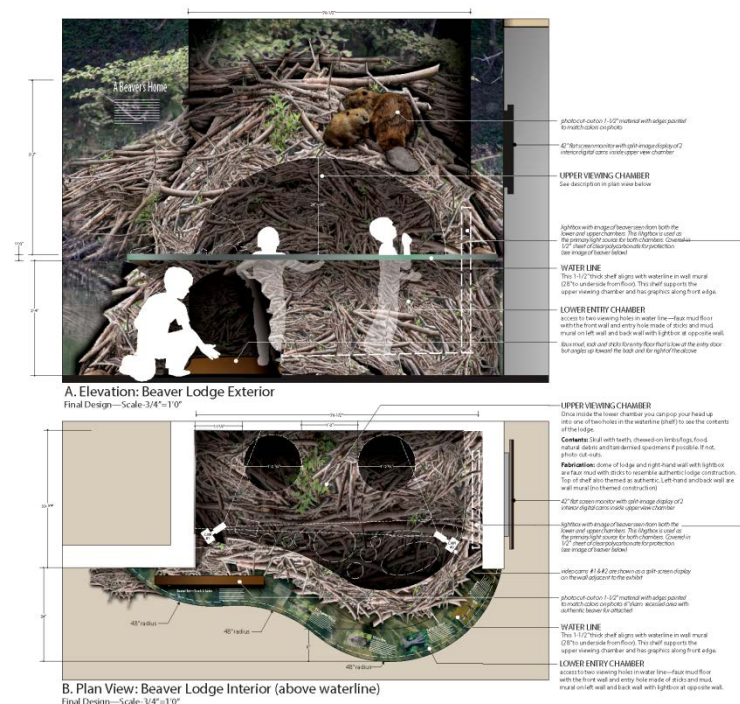


*The Beaver Lodge Exhibit will be positioned along the back wall of the main gallery behind the aquarium array.*

To make the Crawl-in Beaver Lodge a reality, our “Give it to Beaver” campaign goal is \$25,000. We are already more than half way to that goal and hope to be able to begin work on the exhibit in the next couple of months!

Your tax deductible gift today will bring us that much closer to having this new, exciting and interactive display at the Nature Center to help educate all of us on the intriguing world of beavers. Donors contributing \$5,000 or more to the campaign will have the opportunity to be recognized as sponsors of the Beaver Lodge with a stylized bronze leaf on the exhibit.

Contributions can be made using our [secure online donation page](https://www.friendsofsteelcreek.org) (<https://www.friendsofsteelcreek.org>), or by good old fashioned snail mail at: Friends of Steele Creek Nature Center and Park, P.O. Box 1763, Bristol, TN 37621. For more information, you may contact us at [mail@friendsofsteelcreek.org](mailto:mail@friendsofsteelcreek.org).



*Kids will be able to crawl into the lodge, and cameras inside the lodge will allow grown-ups to explore it as well!*

**Give it to Beaver and become one of our “Beaver Believers” today!**

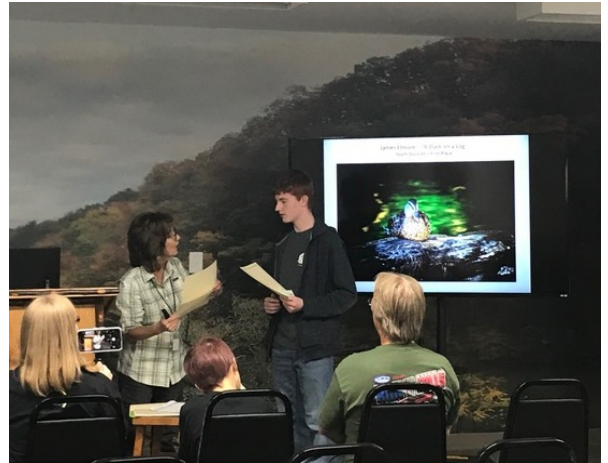
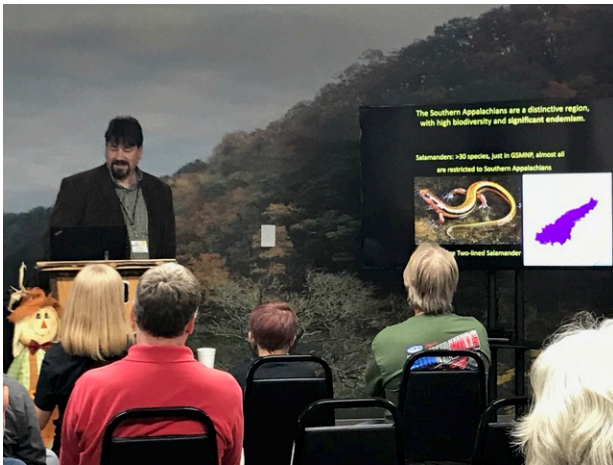


# Wildlife Weekend 2018 in Words and Pictures

By Michele Sparks, with photos by Sonie Schermer

*Friends*, the City of Bristol Tennessee, and the Bristol Bird Club partnered together this year to celebrate the Annual Wildlife Weekend at Steele Creek Park. If you missed it this time, plan to bring the family out next year. Mark your calendars for the 22nd Annual Wildlife Weekend, the second weekend of October, 2019!

*Friends* volunteers provided snacks for the Friday evening reception prior to announcement of the Photography Contest Awards. (The award winning photos can be seen [elsewhere in this newsletter](#).) Thanks to all of our *Friends* members who volunteered, contributed food, and came out to help with Friday night's reception and Saturday's Passport to Nature activities.



Our keynote speaker on Friday night was Dr. Andy Jones of the Cleveland Museum of Natural History. His inspirational talk was entitled "The Nature and Naturalists of the Southern Appalachians." Jones is an expert on birds, their physiology, evolution, migration, and songs. He grew up in Kingsport and worked at Steele Creek's Nature Center as a young naturalist in 1997. His talk focused on the wildlife in our region and the naturalists who contributed to their study.

Dr. Jones' talk can be viewed [here on YouTube](https://www.youtube.com/watch?v=I9KfJYOiAf0) (<https://www.youtube.com/watch?v=I9KfJYOiAf0>)

One of those mentioned in his talk was lifelong resident of Bristol, TN and driving force behind the success of the Bristol Bird Club - J. Wallace Coffey. Jones and Coffey met in 1995 and a lifelong friendship continued until Wallace passed in 2016. Wallace had served on the original Vision Committee of Steele Creek Park (1996-97) in order to promote long-term community involvement and support for the park. The Bristol Bird Club, J. Wallace Coffey Chapter of Tennessee Ornithological Society was thrilled to have Dr. Jones as the keynote speaker this year, which had special significance to many birders attending the event.

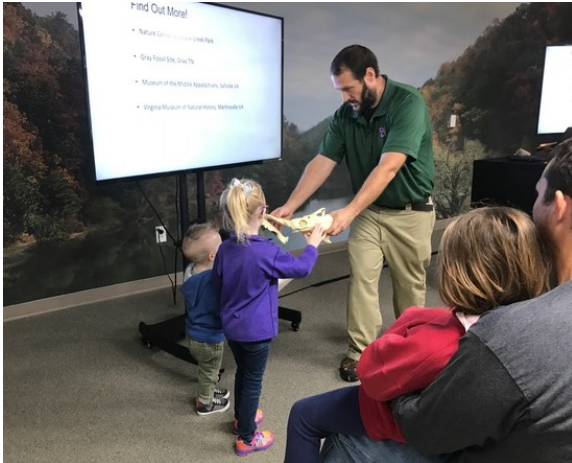
The Passport to Nature activities for Saturday included two back-to-back bird walks, one at 8 am with Larry McDaniel followed by another at 9 am with Andy Jones. Both walks were well attended and included stops at the always popular bird banding station with Richard Lewis and Rack Cross.





## Wildlife Weekend 2018 in Words and Pictures

(Continued)



Later in the morning, Cade Campbell led a “Creepy Crawlies-Arthropods for all Ages” walk and Jeremy Stout presented a talk on the geology of the Park in the DeFriece-Wilson Classroom at the Nature Center. The afternoon included an interpretive program by Lance Jessee on “Reptiles and Amphibians”, and Don Holt covered “Fall Plants and Wildflowers”.



Throughout the day, Passport Activities included “Nature Crafts for the Birds” with the Bristol Bird Club, “Fossil Casting” with Mick Whitelaw, J.R Arnold’s “Fossil Collection”, “Birds of Prey” with Bays Mountain, and “Skins and Skulls” and “Bug Display” with Friends volunteers. Those who came out for Wildlife Weekend could earn up to sixteen stamps in their “Passport to Nature” book!



Thanks go to the City of Bristol TN for their continued sponsorship of Wildlife Weekend, the Bristol Bird Club for their super enthusiastic volunteers, and *Friends* members and supporters for the wonderful things you help us to do! We hope to expand and grow our Wildlife Weekend activities, so please come out to see us next fall.

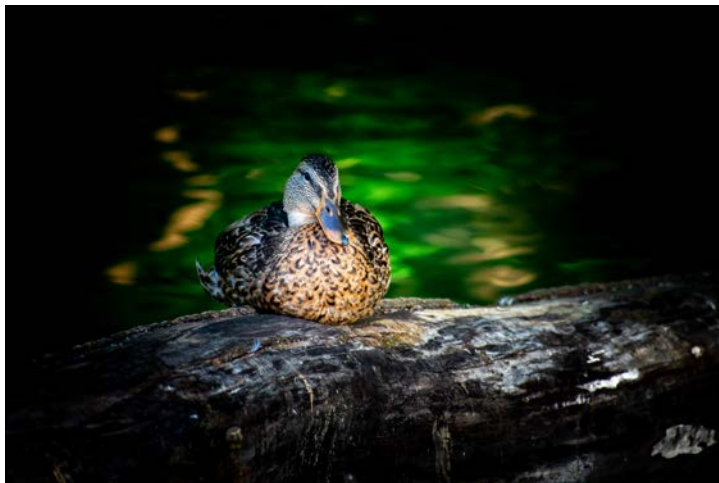


## 2018 Wildlife Weekend Photo Contest Winners

This year's Wildlife Weekend Photography Contest and Show once again included many wonderful entries. With thanks to all of the participating photographers and to our outstanding judges (Earl Neikirk and Chris Duncan), here are this year's awardees.



**"Busy Bee" by Robert Daugherty**  
First Place – Adult Division



**"A Duck on a Log" by James Elmore**  
First Place – Youth Division



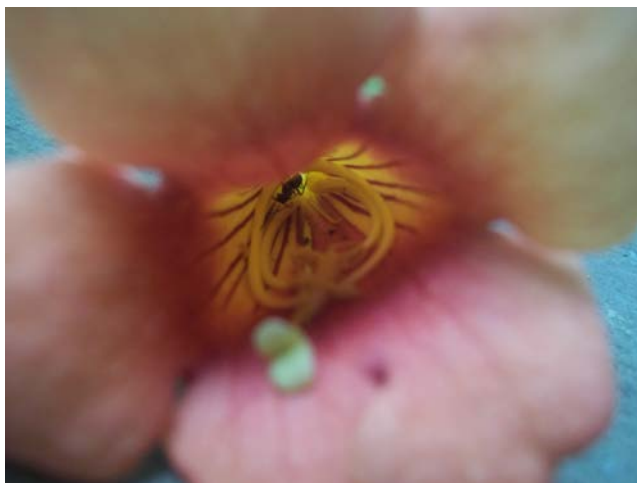
**"Reflection Pool" by Daelan Gearheart**  
Second Place – Youth Division



**"A Duck Alone in the Water" by James Elmore**  
Third Place – Youth Division



**"Nestled Magnolia" by Micah Bechtold**  
Honorable Mention – Youth Division



**"The Acoustics in Here are Awesome" by Ryan Marshall**  
Honorable Mention – Youth Division

## Upcoming Nature Center Programs

**Friday, November 2<sup>nd</sup>**

**4:00 pm: *Fall Foliage and Tree Identification*** – Meet Don at the Nature Center for a moderate walk and learn to identify trees by their leaves and branches. It's also a great time for fall colors!

**Saturday, December 1<sup>st</sup>**

**2:00 pm: *Winter Greenery Hike*** – Meet Don at the Nature Center for a holiday-themed adventure! Enjoy a mild hike in search of winter wonders including Christmas ferns, mistletoe, and hollies. Also, help find and collect a 2018 Christmas tree for our Nature Center!

**4:00 pm: *Christmas Tree Decorating*** – After the hike, we'll come back to the Nature Center to decorate our tree and have some holiday refreshments!

## We're Looking for a Few Great Partners!

To help us continue the important work that we do, and to raise additional funds for new exhibits and educational resources at the Nature Center, we have begun a campaign to partner with local and regional businesses, organizations, and individuals. The purpose of this campaign is to assure an ongoing funding stream for our organization. We hope that you might be interested in becoming a Friend of the Park Partner by making a multi-year commitment of support.

The only requirements for becoming a Partner are 1) a signed agreement pledging to contribute a minimum of \$500 per year for at least two years, and 2) timely payment of pledged amounts according to the agreement. Total contribution amounts for the five partnership levels are: Oak - \$20,000 or more; Maple - \$10,000 to \$19,999; Chestnut - \$5,000 to \$9,999; Hemlock - \$2,500 to \$4,999; and Poplar - \$1,000 to \$2,499.

Sponsoring Partner's name(s) (with the designated level) will be prominently displayed in and around the Nature Center and in *Friends* advertising and promotional materials. Sponsoring Partners and their guests will be invited to attend all after-hours donor programs. For Chestnut level (\$5,000 total) and above, Sponsoring Partners will have the opportunity to be recognized as an exhibit sponsor with a stylized plaque placed on an exhibit of the donor's choosing (limited to those exhibits not already sponsored).

If you think you or your organization might want to become a Friend of the Park Partner, contact us at [mail@friendsofsteelecreek.org](mailto:mail@friendsofsteelecreek.org) or by calling (423) 764-8828.

You can keep up with what's going on at the Park and with *Friends* by liking us on Facebook (Friends of Steele Creek Nature Center and Park) or by following our webpage at <https://www.friendsofsteelecreek.org>.

We appreciate feedback about our communication. Let us know if you find these newsletters interesting and/or useful. If you have suggestions for topics to be covered, or other formats that we could use, let us know by e-mail at [mail@friendsofsteelecreek.org](mailto:mail@friendsofsteelecreek.org).

**If you prefer to not receive these newsletters, simply let us know at [mail@friendsofsteelecreek.org](mailto:mail@friendsofsteelecreek.org).**